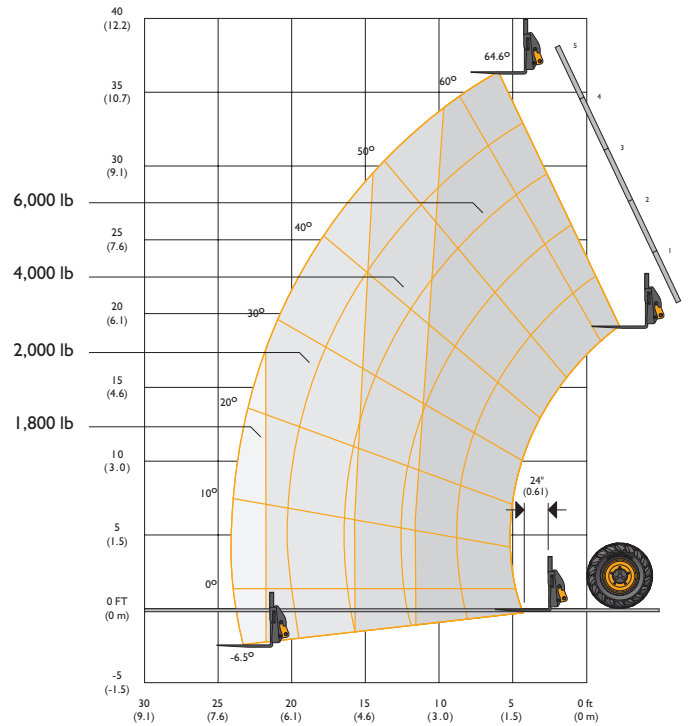


#### STATIC DIMENSIONS 506-36

A Overall Height	ft-in (mm)	8-3 (2510)
B Overall Width	ft-in (mm)	7-10 (2388)
C Inside Width of Cab	ft-in (mm)	3-3 (940)
D Front Track	ft-in (mm)	6-4 (1936)
E Wheelbase	ft-in (mm)	10-0 (3048)
F Overall Length to Front Tires	ft-in (mm)	17-1 (5211)

G Overall Length to Front of Carriage	ft-in (mm)	19-5 (5918)
H Ground Clearance	ft-in (mm)	1-3½ (396)
Outside Turn Radius (over tires)	ft-in (mm)	14-6 (4420)
Tires		13.00-24
Weight (unladen)	lb (kg)	20,270 (9193)

### LIFT PERFORMANCE



This load chart is for the rated capacity of the machine with 66" wide standard carriage and 48" pallet forks. Use only JCB approved attachments and check the relevant load chart for the machine model. If in doubt, consult your dealer.

If the load rating of the machine differs to that of the attachment, the lower rating becomes the overall capacity.

### LIFT PERFORMANCE

Maximum Lift Capacity	lb (kg)	6000 (2722)
Lift Capacity to Full Height	lb (kg)	6000 (2722)
Lift Capacity at Full Reach	lb (kg)	1800 (816)
Lift Height	ft-in (m)	36-4 (11.07)
Reach at Maximum Lift Height	ft-in (m)	6-4 (1.93)
Maximum Forward Reach	ft-in (m)	24-0 (7.31)
Frame Sway Left or Right	degrees	10°

Complies with ASME B56.6 2002

### ENGINE

Latest technology and advanced design provides low fuel consumption, reduced noise, high torque and power output, total reliability and minimal maintenance. Two-stage, dry type air filter with primary and safety elements. EPA Tier III, EU Stage 3 emissions compliant.

Machine Model – 506-36		Standard	Optional
Displacement	in <sup>3</sup> (l)	269 (4.4)	269 (4.4)
Number of Cylinders		4	4
Bore Size	in (mm)	4.05 (103)	4.05 (103)
Stroke	in (mm)	5.0 (132)	5.0 (132)
Aspiration		Turbo	Turbo
<b>Power Rating</b>			
Power @ 2200 rpm	hp (kW)	85 (63)	100 (74.2)
<b>Torque Rating</b>			
Torque @ 1200 rpm	lb ft (nm)	267 (362)	–
Torque @ 1300 rpm	lb ft (nm)	–	324 (440)