

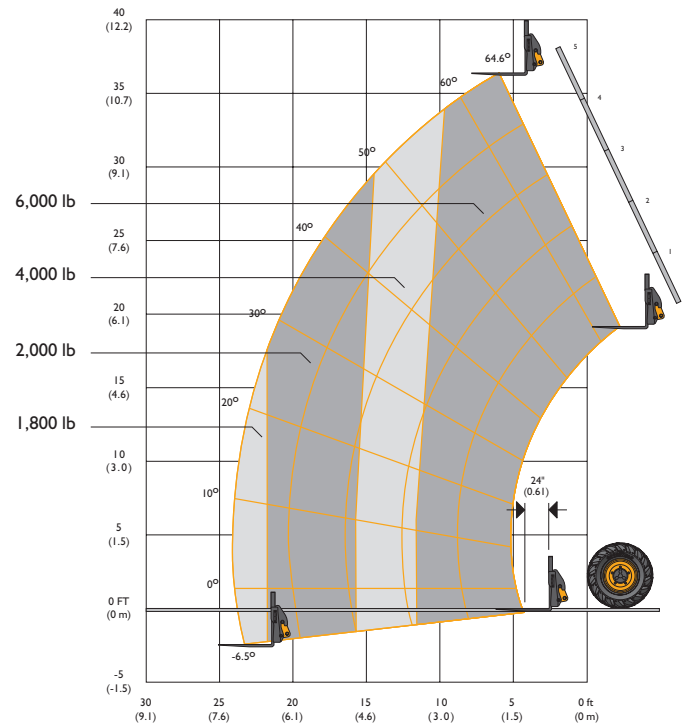
#### STATIC DIMENSIONS 507-42

A	Overall height	ft-in (mm)	8-3 (2525)
B	Overall width	ft-in (mm)	7-10 (2388)
C	Inside width of cab	ft-in (mm)	3-3 (940)
D	Front track	ft-in (mm)	6-7 (2008)
E	Wheelbase	ft-in (mm)	10-4 (3150)
F	Overall length to front tyres	ft-in (mm)	17-8 (5386)

G	Overall length to front of carriage	ft-in (mm)	21-3 (6477)
H	Ground clearance	ft-in (mm)	1-3½ (396)
	Outside turn radius (over tyres)	ft-in (mm)	13-9 (4191)
	Tires		14.00-24 16PR
	Weight (unladen)	lb (kg)	21,300 (9,660)



### LIFT PERFORMANCE / 506-36



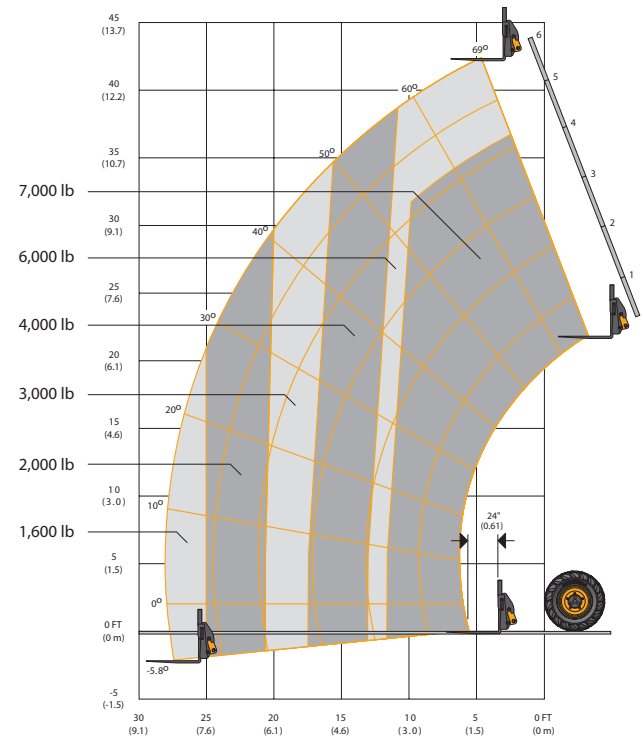
This load chart is for the rated capacity of the machine with 66" wide standard carriage and 48" pallet forks. Use only JCB approved attachments and check the relevant load chart for the machine model. If in doubt, consult your dealer. If the load rating of the machine differs to that of the attachment, the lower rating becomes the overall capacity.

### LIFT PERFORMANCE / 506-36

Maximum Lift Capacity	lb (kg)	6000 (2722)
Lift Capacity to Full Height	lb (kg)	6000 (2722)
Lift Capacity at Full Reach	lb (kg)	1800 (816)
Lift Height	ft-in (m)	36-4 (11.07)
Reach at Maximum Lift Height	ft-in (m)	6-4 (1.93)
Maximum Forward Reach	ft-in (m)	24-0 (7.31)
Frame Sway Left or Right	degrees	10°

Complies with ASME B56.6 2002

### LIFT PERFORMANCE / 507-42



This load chart is for the rated capacity of the machine with 66" wide standard carriage and 48" pallet forks. Use only JCB approved attachments and check the relevant load chart for the machine model. If in doubt, consult your dealer. If the load rating of the machine differs to that of the attachment, the lower rating becomes the overall capacity. Automatic rear axle stabilization (RAS) system.

### LIFT PERFORMANCE / 507-42

Maximum lift capacity	lbs (kg)	7000 (3176)
Lift capacity to full height	lbs (kg)	6000 (2722)
Lift capacity at full reach	lbs (kg)	1600 (725)
Lift height	ft-in (m)	42-0 (12.8)
Reach at maximum lift height	ft-in (m)	4-11 (1.50)
Maximum forward reach	ft-in (m)	28-0 (8.53)
Frame sway left or right	degrees	10°

Complies with ASME B56.6 2002