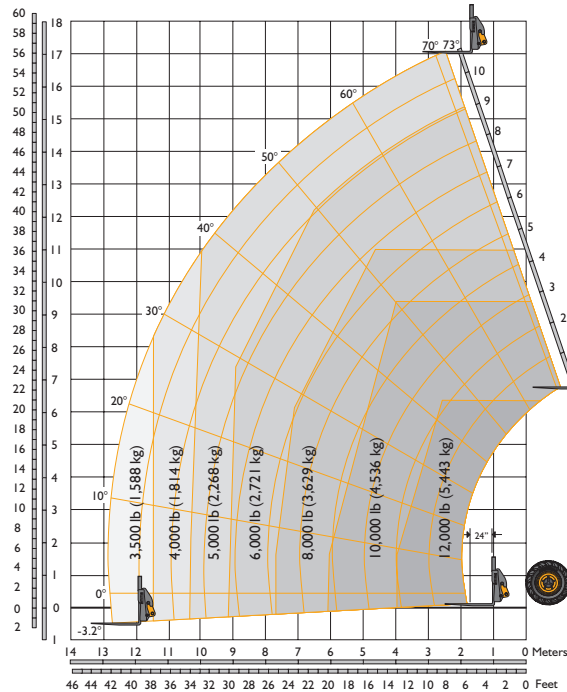


### STATIC DIMENSIONS 512-56

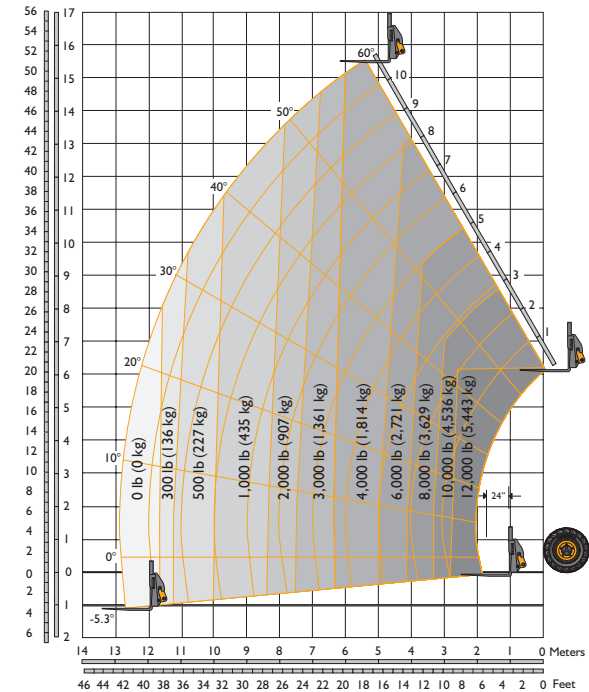
A	Overall Height	ft-in (mm)	8-10 (2692)
B	Overall Width	ft-in (mm)	8-1 (2471)
C	Inside Width of Cab	ft-in (mm)	3-1 (940)
D	Front Track	ft-in (mm)	6-7 (2008)
E	Wheelbase	ft-in (mm)	10-4 (3150)
F	Overall Length to Front Tires	ft-in (mm)	17-9 (5406)

G	Overall Length to Front of Carriage	ft-in (mm)	21-7 (6579)
H	Ground Clearance	ft-in (mm)	1-5½ (444)
	Outside Turn Radius (over tires)	ft-in (mm)	14-1 (4293)
	Tires		17.5-25
	Weight (unladen)	lb (kg)	30,635 (13,900)

### LIFT PERFORMANCE – STABILIZERS EXTENDED



### LIFT PERFORMANCE – STABILIZERS RETRACTED



These load charts are for the rated capacity of the machine with 72" wide standard carriage and 48" pallet forks.

### ENGINE

Latest technology and advanced design provides low fuel consumption, reduced noise, high torque and power output, total reliability and minimal maintenance. Two-stage, dry type air filter with primary and safety elements. EPA Tier III and EU Stage 3 emission compliant.

Machine Model – 512-56		Standard
Displacement	in <sup>3</sup> (l)	269 (4.4)
Number of Cylinders		4
Bore Size	in (mm)	4.05 (103)
Stroke	in (mm)	5.0 (132)
Aspiration		Turbo
Power Rating		
Power @ 2200 rpm	hp (kW)	114 (85)
Torque Rating		
Torque @ 1300 rpm	lb ft (nm)	324 (440)

### LIFT PERFORMANCE

Maximum Capacity	lb (kg)	12,000 (5444)
Lift Capacity to 52 ft (on tires)	lb (kg)	4000 (1814)
Lift Capacity to Full Height (on stabilizers)	lb (kg)	5000 (2268)
Lift Capacity at 38 ft Reach (on tires)	lb (kg)	300 (136)
Lift Capacity at Full Reach (on stabilizers)	lb (kg)	3500 (1588)
Lift Height	ft-in (m)	56 (17.07)
Reach at Maximum Lift Height	ft-in (m)	8-2 (2.49)
Maximum Forward Reach	ft-in (m)	42 (12.80)
Frame Sway Left or Right	degrees	10

Complies with ANSI/ITSDF B56.6