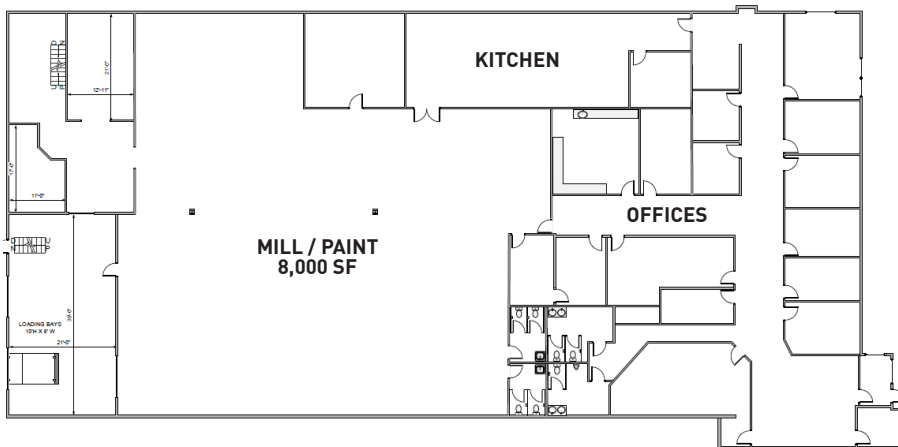




FILM & TV

MILLCREEK SUPPORT



HIGHLIGHTS

- 15 offices with a large boardroom
- Double loading bay doors
- Heating and ventilation
- 24/7 security
- Kitchen

SPECIFICATIONS

Mill/Paint: 8,000 sq. ft.
Office Support Space: 5,500 sq. ft.
Total Space: 13,500 sq. ft.