



FILM & TV

EDWARDS STUDIO

Edwards Studio offers 151,130 square feet of production-ready space, with 40 feet in column spacing in the stages, and 28 feet clear height throughout the building. Edwards Studio houses four sound stages, as well as a mill shop, paint shop, two floors of departmental offices, and ample storage space.



6115 Edwards Blvd, Mississauga, ON
sunbeltrentals.com


[VIEW ON MAP](#)


HIGHLIGHTS

- Production office with IP phones
- 10 GB fiber-optic service
- 3 kitchens complete with fridge and dishwasher
- Full-service paint shop complete with paint spray booth
- Mill shop
- Set decoration and props lockups


FEATURES

 100 parking spots

 28' high ceilings

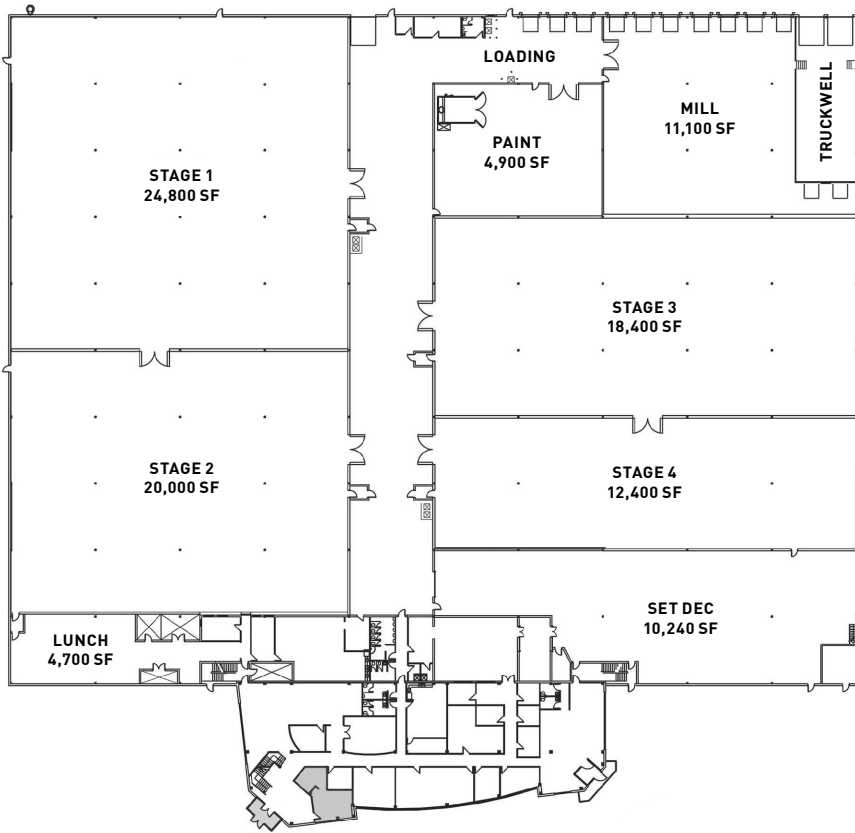
 40' column spacing

 3,600 amps

 Nearby:

- 7 mins from Legacy Studio
- 7 mins from Heritage Studio
- 10 mins from CBS Stages
- 20 mins from Sunbelt Rentals Film & TV Office and Rental House
- 30 mins from Downtown Toronto

MAIN FLOOR



SPECIFICATIONS

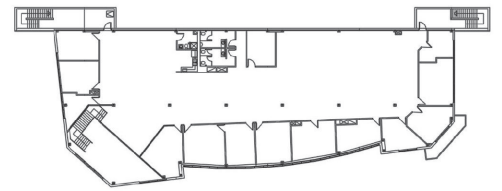
Stage 1: 24,800 sq. ft.
Stage 2: 20,000 sq. ft.
Stage 3: 18,400 sq. ft.
Stage 4: 12,400 sq. ft.
Total Flex Space: 75,600 sq. ft.

Paint Shop: 4,900 sq. ft.
Mill Shop: 11,100 sq. ft.
Production Offices: 21,545 sq. ft.
Set Dec: 10,240 sq. ft.
Lunch: 4,700 sq. ft.

Total Support Space: 52,485 sq. ft.

Total Facility Space: 128,085 sq. ft.

UPPER FLOOR



Our Studios, Your Production

Visit our website, email us, or call us to learn more about Edwards Studio. Our seasoned professionals can deliver solutions that exceed your specifications.

sunbeltrentals.com | 800-667-9328

